

# SpeedCure BEM

Feb-2022 v. 1

## Technical Data Sheet

### General Information

SpeedCure BEM is a Norrish Type II photoinitiator of the benzophenone family, with an absorption maximum at 254 nm. SpeedCure BEM provides high reactivity and surface cure when used at 0.5-5 wt% and combined with an amine synergist in UV curable formulations.

#### Chemical Name

A eutectic mixture of benzophenone and methylbenzophenones

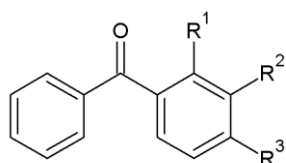
#### CAS Number

131-58-8, 134-84-9, 119-61-9

#### EC Number

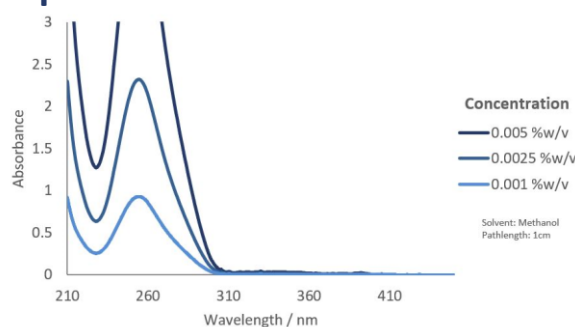
205-032-0, 205-159-1, 204-337-6

### Structure



	R <sup>1</sup>	R <sup>2</sup>	R <sup>3</sup>
Benzophenone	H	H	H
2-methylbenzophenone	CH <sub>3</sub>	H	H
4-methylbenzophenone	H	H	CH <sub>3</sub>

### UV Spectrum



### Specification (LAM 174)

Appearance :

Light yellow clear liquid

Benzophenone Content (GC) :

45.0 - 55.0 %w/w

4-Methylbenzophenone Content (GC) :

40.0 - 50.0 %w/w

2-Methylbenzophenone Content (GC) :

3.0 - 10.0 %w/w

### Applications

- Clear coatings
- Pigmented systems
- Electronics
- Adhesives

### Storage and Handling

Stable for at least 2 year(s) at 20°C in a sealed container in the dark. A Safety Data Sheet is available on request.

### Transport Classification

(EUROPE AND USA) NON-HAZARDOUS

### Global Inventories

REACH, EINECS, TSCA, DSL or NDSL, TSCI

Disclaimer: Please consult Arkema's disclaimer regarding the use of our products on <https://www.arkema.com/en/products/product-safety/disclaimer/>