

# SpeedCure CPTX

Feb-2022 v.10

## Technical Data Sheet

### General Information

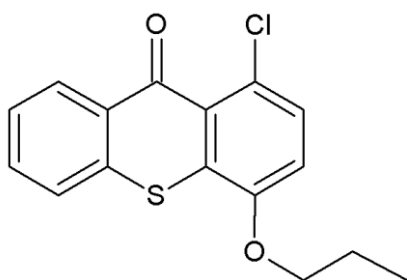
SpeedCure CPTX is a Norrish Type II photoinitiator of the thioxanthone family, with absorption maxima at 257, 314 and 389 nm. SpeedCure CPTX provides long wavelength sensitisation of appropriate photoinitiators and depth cure when used at 0.1-5 wt% and combined with an amine synergist in UV and LED curable formulations.

### Chemical Name

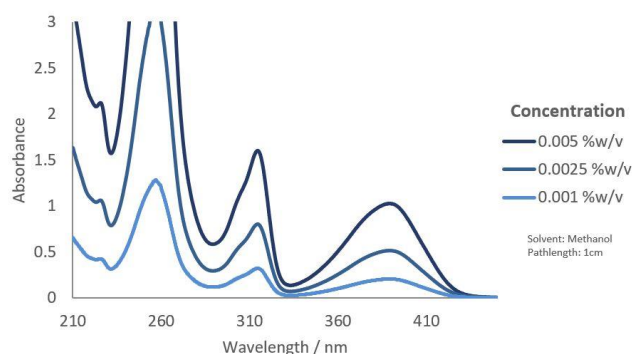
1-chloro-4-propoxythioxanthone

CAS Number	EC Number	Mol. Wt.
142770-42-1	415-890-1	304.8

### Structure



### UV Spectrum



### Specification (LAM 177)

Appearance :	Yellow solid
Purity (GC) :	≥ 97.0 %area
Melting Range :	99.0 - 104.0 °C
Loss on Drying (60°C, 3 hours, 50-100mbar) :	≤ 0.5 %w/w
Gardner Colour (5%w/v Toluene) :	≤ 11.0
Insoluble Matter (5%w/v Toluene) :	Essentially clear

### Applications

- LED curing
- Electronics
- Adhesives
- Composites
- Pigmented systems
- Black pigmented systems
- Metal coatings
- Glass coatings

### Storage and Handling

Stable for at least 2 year(s) at 20°C in a sealed container in the dark. A Safety Data Sheet is available on request.

### Transport Classification

(EUROPE AND USA) HAZARDOUS  
Class 9 Packing Group III UN 3077

### Global Inventories

REACH, ELINCS, TSCA, NDSL, NZIoC, ISHL, TSCI

Disclaimer: Please consult Arkema's disclaimer regarding the use of our products on <https://www.arkema.com/en/products/product-safety/disclaimer/>