

SpeedCure XKm

Feb-2022 v.8

Technical Data Sheet

General Information

SpeedCure XKm is a hybrid Norrish Type I / Norrish Type II photoinitiator from the phosphine oxide family, with absorption maxima at 247 and 364 nm. SpeedCure XKm provides high reactivity, surface cure and depth cure when used at 0.5-5 wt% and combined with an amine synergist in UV curable formulations.

Chemical Name

Ethyl(3-benzoyl-2,4,6-trimethylbenzoyl)(phenyl) phosphinate

CAS Number

1539267-56-5

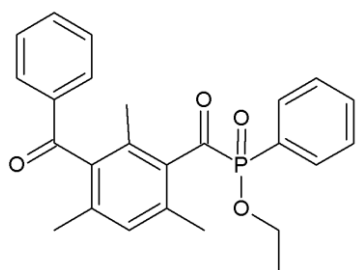
EC Number

n/a

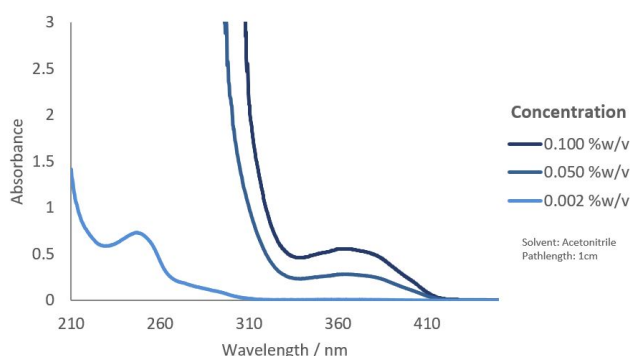
Mol. Wt.

420.4

Structure



UV Spectrum



Specification (LAM 358)

Appearance :

Off-white to beige solid

Purity (HPLC) :

≥ 97.0 %area

Melting Range :

85.0 - 92.0 °C

Loss on Drying (60°C, 3 hours, 50-100mbar) :

≤ 0.5 %w/w

Applications

- Adhesives
- Clear coatings
- 3D printing
- Composites
- Electronics
- Pigmented systems
- LED curing
- White pigmented systems
- Black pigmented systems

Storage and Handling

Stable for at least 2 year(s) at 20°C in a sealed container in the dark. A Safety Data Sheet is available on request.

Transport Classification

(EUROPE AND USA) HAZARDOUS
Class 9 Packing Group III UN 3077

Global Inventories

REACH, TSCA

Disclaimer: Please consult Arkema's disclaimer regarding the use of our products on <https://www.arkema.com/en/products/product-safety/disclaimer/>