

SpeedCure 210

Dec-2020 v. 6

Technical Data Sheet

General Information

SpeedCure 210 is a blend of Norrish Type I and Norrish Type II photoinitiators from the hydroxyacetophenone and benzophenone families, with an absorption maximum at 249 nm. SpeedCure 210 provides high reactivity and surface cure when used at 0.5-5 wt% and combined with an amine synergist in UV curable formulations.

Chemical Name

A mixture of 2-hydroxy-2-methyl-1-phenylpropan-1-one and benzophenone (A mixture of Speedcure 73 and Speedcure BP)

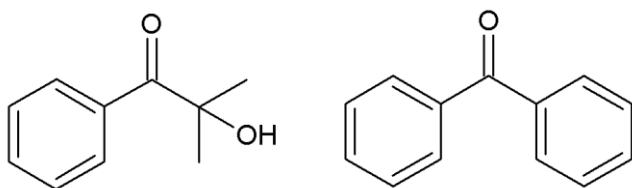
CAS Number

7473-98-5, 119-61-9

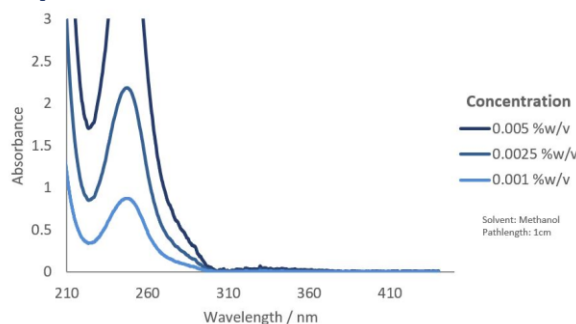
EC Number

231-272-0, 204-337-6

Structure



UV Spectrum



Specification (LAM 396)

Appearance (40°C) :

Speedcure 73 Content (GC) :

SpeedCure BP Content (GC) :

Colourless to pale yellow liquid

45.0 - 55.0 %w/w

45.0 - 55.0 %w/w

Applications

- Clear coatings
- Pigmented systems
- White pigmented systems
- Black pigmented systems
- Water based systems
- 3D printing
- Adhesives
- Composites

Storage and Handling

May crystallise during storage at ambient temperature.

Warm to 35-40°C and mix thoroughly prior to use.

Transport Classification

(EUROPE AND USA) NON-HAZARDOUS

Global Inventories

REACH, EINECS, TSCA, DSL, AICS, NZIoC, IECSC, CSCL, ECL, PICCS, TSCI

Disclaimer: Please consult Arkema's disclaimer regarding the use of our products on <https://www.arkema.com/en/products/product-safety/disclaimer/>

LAMBSON[™]
SPEEDCURE
BY ARKEMA