

SpeedCure 2100

Aug-2020 v. 6

Technical Data Sheet

General Information

SpeedCure 2100 is a liquid formulated blend of photoinitiators, with absorption maxima at 228, 272 and 368 nm. SpeedCure 2100 provides excellent depth curing for a broad range of applications when used at 0.5-5 wt% in UV curable formulations.

Chemical Name

A blend of SpeedCure TPO-L and SpeedCure BPO

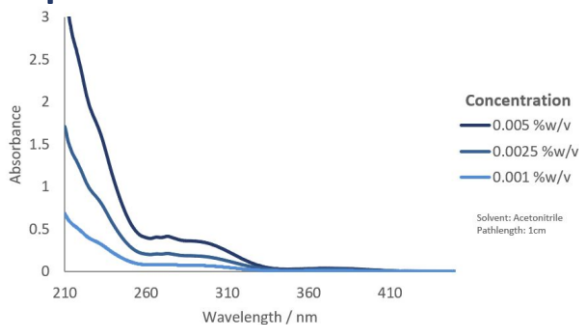
CAS Number

84434-11-7, 162881-26-7

EC Number

282-810-6, 423-340-5

UV Spectrum



Specification (LAM 390)

Appearance :	Yellow clear liquid
Water Content (Karl Fischer) :	≤ 0.5 %w/w
Gardner Colour (Neat) :	≤ 8.0

Applications

- UV cured systems
- Clear systems
- Pigmented systems
- White pigmented systems
- Low yellowing applications
- Wood coatings
- Varnishes

Storage and Handling

Stable for at least 2 year(s) at 20°C in a sealed container in the dark. A Safety Data Sheet is available on request.

Global Inventories

REACH, EC, TSCA, DSL, AICS, NZIoC, IECSC, ISHL, ECL, TSCI

Transport Classification

(EUROPE AND USA) HAZARDOUS
Class 9 Packing Group III UN 3082

Disclaimer: Please consult Arkema's disclaimer regarding the use of our products on <https://www.arkema.com/en/products/product-safety/disclaimer/>

LAMBSON[™]
SPEEDCURE
BY ARKEMA