

SpeedCure BCIM

Aug-2020 v.7

Technical Data Sheet

General Information

SpeedCure BCIM is a photoinitiator of the hexaaryl bisimidazole (HABI) family, with absorption maximum at 264 nm. SpeedCure BCIM produces highly reactive species when used at 0.1-5 wt% and combined with appropriate co-initiators such as, LCV or thiols in UV and LED curable formulations.

Chemical Name

2-(2-chlorophenyl)-1-[2-(2-chlorophenyl)-4,5-diphenyl-2H-imidazol-2-yl]-4,5-diphenyl-1H-imidazole

CAS Number

7189-82-4

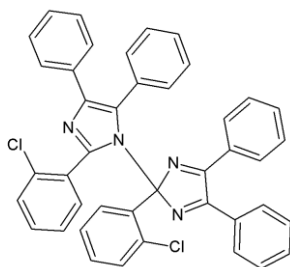
EC Number

230-555-6

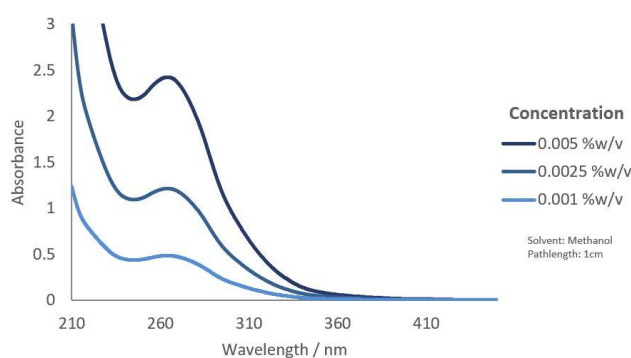
Mol. Wt.

659.6

Structure



UV Spectrum



Specification (LAM 172)

Appearance :

Yellow solid

Purity (HPLC) :

≥ 99.0 %area

Melting Range :

≥ 200.0 °C

Loss on Drying (60°C, 3 hours, 50-100mbar) :

≤ 0.3 %w/w

Applications

- Electronics
- Pigmented systems
- LED curing
- Adhesives

Storage and Handling

Stable for at least 2 year(s) at 20°C in a sealed container in the dark. A Safety Data Sheet is available on request.

Transport Classification

(EUROPE AND USA) NON-HAZARDOUS

Global Inventories

REACH, EINECS, TSCA, NDSL, AICS, IECSC, ISHL, CSCL, ECL, TSCI

Disclaimer: Please consult Arkema's disclaimer regarding the use of our products on <https://www.arkema.com/en/products/product-safety/disclaimer/>

LAMBSON[™]
SPEEDCURE
BY ARKEMA