

# SpeedCure BEDB

Aug-2020 v.7

## Technical Data Sheet

### General Information

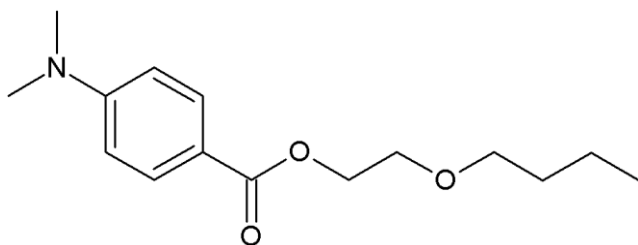
SpeedCure BEDB is a liquid amine synergist of the aminobenzoate family. SpeedCure BEDB generates active species when used at 2-8 wt% in combination with Norrish Type II photoinitiators and reduces oxygen inhibition in UV and LED curable formulations.

### Chemical Name

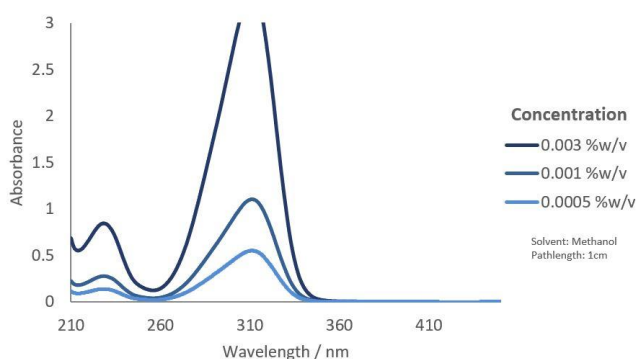
2-butoxyethyl-4-(dimethylamino)benzoate

CAS Number	EC Number	Mol. Wt.
67362-76-9	266-668-2	265.4

### Structure



### UV Spectrum



### Specification (LAM 173)

Appearance :

Purity (GC) :

Loss on Drying (60°C, 3 hours, 50-100mbar) :

Colourless to pale yellow clear liquid

≥ 97.0 %area

≤ 1.0 %w/w

### Applications

- Pigmented systems
- Water based systems
- LED curing
- Adhesives

### Storage and Handling

Stable for at least 2 year(s) at 20°C in a sealed container in the dark. A Safety Data Sheet is available on request.

### Global Inventories

EINECS, TSCA, NDSL, NZIoC, IECSC, PICCS, TSCI

### Transport Classification

(EUROPE AND USA) NON-HAZARDOUS

Disclaimer: Please consult Arkema's disclaimer regarding the use of our products on <https://www.arkema.com/en/products/product-safety/disclaimer/>

**LAMBSON**  
SPEEDCURE  
BY ARKEMA