

SpeedCure BEM

Jun-2020 v. 7

Technical Data Sheet

General Information

SpeedCure BEM is a Norrish Type II photoinitiator of the benzophenone family, with an absorption maximum at 254 nm. SpeedCure BEM provides high reactivity and surface cure when used at 0.5-5 wt% and combined with an amine synergist in UV curable formulations.

Chemical Name

A eutectic mixture of benzophenone and methylbenzophenones

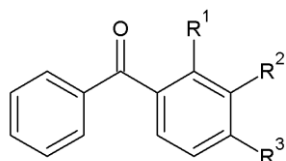
CAS Number

131-58-8, 134-84-9, 119-61-9

EC Number

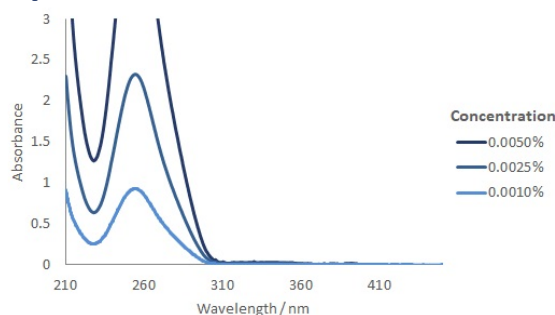
205-032-0, 205-159-1, 204-337-6

Structure



	R ¹	R ²	R ³
Benzophenone	H	H	H
2-methylbenzophenone	CH ₃	H	H
4-methylbenzophenone	H	H	CH ₃

UV Spectrum



Specification (LAM 174)

Appearance :

Clear, light yellow liquid

Benzophenone Content (By GC Area %) :

45.0 - 55.0 %

4-Methylbenzophenone Content (By GC Area %) :

40.0 - 50.0 %

2-Methylbenzophenone Content (By GC Area %) :

3.0 - 10.0 %

Applications

- Clear coatings
- Pigmented systems
- Electronics
- Adhesives

Storage and Handling

Stable for at least 2 year(s) at 20°C in a sealed container in the dark. A Safety Data Sheet is available on request.

Transport Classification

(EUROPE AND USA) NON-HAZARDOUS

Global Inventories

REACH, EINECS, TSCA, DSL/NDL, CSNN

Disclaimer: Please consult Arkema's disclaimer regarding the use of our products on <https://www.arkema.com/en/products/product-safety/disclaimer/>

LAMBSON
SPEEDCURE
BY ARKEMA