

SpeedCure BKL

Aug-2020 v.7

Technical Data Sheet

General Information

SpeedCure BKL is a Norrish Type I photoinitiator from the acetophenone family, with an absorption maximum at 253 nm. SpeedCure BKL provides high reactivity and surface cure when used at 0.5-5wt% in UV curable formulations.

Chemical Name

2,2-dimethoxy-1,2-phenylacetophenone

CAS Number

24650-42-8

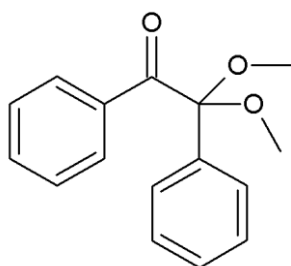
EC Number

246-386-6

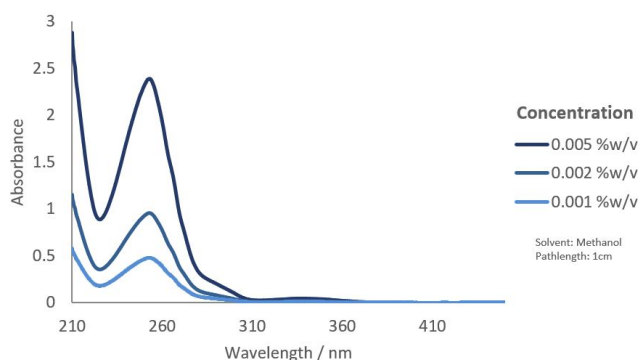
Mol. Wt.

256.3

Structure



UV Spectrum



Specification (LAM 175)

Appearance :

Purity (GC) :

Melting Range :

Loss on Drying (40°C, 16 hours, 50-100mbar) :

White to off-white crystalline powder

≥ 99.0 %area

64.0 - 69.0 °C

≤ 0.5 %w/w

Applications

- Pigmented systems
- Black pigmented systems
- LED curing
- Electronics
- Adhesives
- Composites

Storage and Handling

Stable for at least 2 year(s) at 20°C in a sealed container in the dark. A Safety Data Sheet is available on request.

Transport Classification

(EUROPE AND USA) NON-HAZARDOUS

Global Inventories

REACH, EINECS, TSCA, DSL, AICS, NZIoC, IECSC, CSCL, ECL, PICCS, TSCI

Disclaimer: Please consult Arkema's disclaimer regarding the use of our products on <https://www.arkema.com/en/products/product-safety/disclaimer/>

LAMBSON
SPEEDCURE
BY ARKEMA