

SpeedCure BMS

Aug-2020 v.7

Technical Data Sheet

General Information

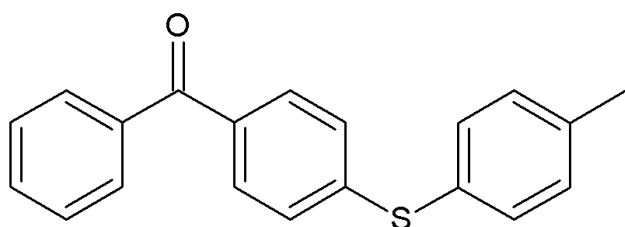
SpeedCure BMS is a Norrish Type II photoinitiator of the benzophenone family, with absorption maxima at 246 and 315 nm. SpeedCure BMS provides high reactivity, surface cure and depth cure when used at 0.5-5 wt% and combined with an amine synergist in UV and LED curable formulations.

Chemical Name

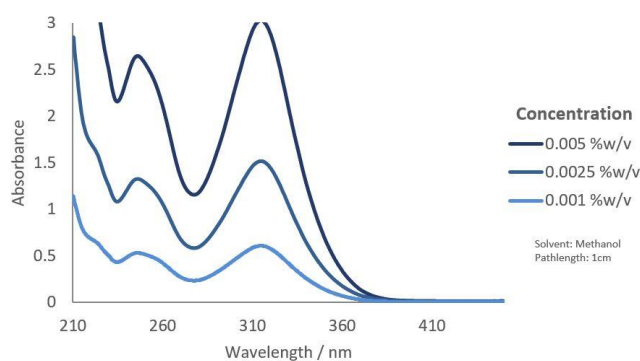
4-benzoyl-4'-methylphenyl sulphide

CAS Number	EC Number	Mol. Wt.
83846-85-9	281-064-9	304.4

Structure



UV Spectrum



Specification (LAM 176)

Appearance :	White to off-white solid
Purity (GC) :	≥ 98.0 %area
Melting Range :	75.0 - 85.0 °C
Loss on Drying (60°C, 3 hours, 50-100mbar) :	≤ 0.5 %w/w

Applications

- Clear coatings
- Pigmented systems
- LED curing
- Electronics
- Adhesives

Storage and Handling

Stable for at least 2 year(s) at 20°C in a sealed container in the dark. A Safety Data Sheet is available on request.

Transport Classification

(EUROPE AND USA) NON-HAZARDOUS

Global Inventories

REACH, EINECS, TSCA, NDSL, AICS, NZIoC, IECSC, ISHL, CSCL, ECL, PICCS, TSCI

Disclaimer: Please consult Arkema's disclaimer regarding the use of our products on <https://www.arkema.com/en/products/product-safety/disclaimer/>