

SpeedCure DETX

Aug-2020 v.7

Technical Data Sheet

General Information

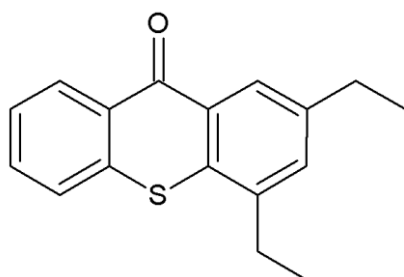
SpeedCure DETX is a Norrish Type II photoinitiator of the thioxanthone family, with absorption maxima at 261, 291 and 386 nm. SpeedCure DETX provides long wavelength sensitisation of appropriate photoinitiators and depth cure when used at 0.1-5 wt% and combined with an amine synergist in UV and LED curable formulations.

Chemical Name

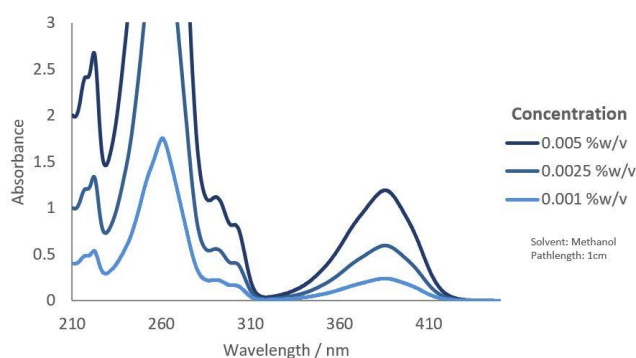
2,4-Diethylthioxanthone

CAS Number	EC Number	Mol. Wt.
82799-44-8	280-041-0	268.3

Structure



UV Spectrum



Specification (LAM 179)

Appearance :
Purity (GC) :
Melting Range :
Loss on Drying (60°C, 3 hours, 50-100mbar) :

Pale yellow to yellow solid
≥ 99.0 %area
68.0 - 75.0 °C
≤ 0.25 %w/w

Applications

- Pigmented systems
- Black pigmented systems
- LED curing

Storage and Handling

Stable for at least 2 year(s) at 20°C in a sealed container in the dark. A Safety Data Sheet is available on request.

Transport Classification

(EUROPE AND USA) NON-HAZARDOUS

Global Inventories

REACH, EINECS, TSCA, NDSL, AICS, NZIoC, IECSC, ISHL, CSCL, ECL, PICCS, TSCI

Disclaimer: Please consult Arkema's disclaimer regarding the use of our products on <https://www.arkema.com/en/products/product-safety/disclaimer/>

LAMBSON
SPEEDCURE
BY ARKEMA