

SpeedCure EDB

Aug-2020 v.8

Technical Data Sheet

General Information

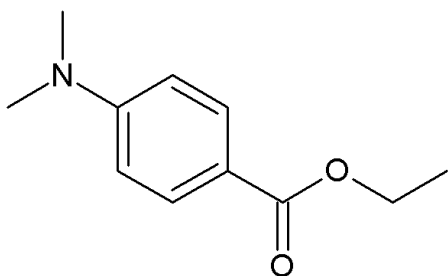
SpeedCure EDB is an amine synergist of the aminobenzoate family. SpeedCure EDB generates active species when used at 2-8 wt% in combination with Norrish Type II photoinitiators and reduces oxygen inhibition in UV and LED curable formulations.

Chemical Name

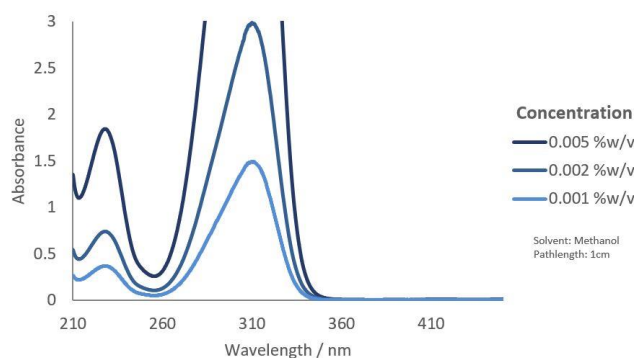
Ethyl-4-(dimethylamino)benzoate

CAS Number	EC Number	Mol. Wt.
10287-53-3	233-634-3	193.2

Structure



UV Spectrum



Specification (LAM 182)

Appearance :	White to off-white solid
Purity (GC) :	≥ 98.0 %area
Melting Range :	62.0 - 68.0 °C
Water Content (Karl Fischer) :	≤ 0.2 %w/w

Applications

- Pigmented systems
- LED curing
- Electronics
- Adhesives

Storage and Handling

Stable for at least 2 year(s) at 20°C in a sealed container in the dark. A Safety Data Sheet is available on request.

Transport Classification

(EUROPE AND USA) HAZARDOUS
Class 9 Packing Group III UN 3077

Global Inventories

REACH, EINECS, TSCA, DSL, AICS, NZIoC, IECSC, ISHL, CSCL, ECL, PICCS, TSCI

Disclaimer: Please consult Arkema's disclaimer regarding the use of our products on <https://www.arkema.com/en/products/product-safety/disclaimer/>

LAMBSON[™]
SPEEDCURE
BY ARKEMA