

# SpeedCure EMK

Aug-2020 v. 6

## Technical Data Sheet

### General Information

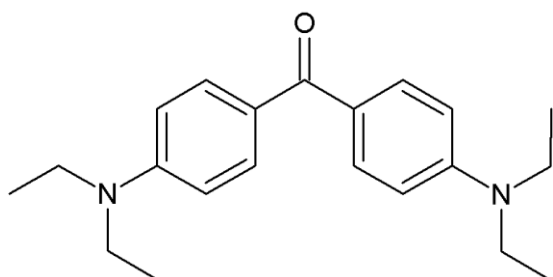
SpeedCure EMK is a Norrish Type II photoinitiator of the benzophenone family and an amine synergist, with absorption maxima at 250 and 378 nm. SpeedCure EMK provides high reactivity and depth cure when used at 0.5-5 wt% and combined with an amine synergist in highly pigmented UV and LED curable formulations.

### Chemical Name

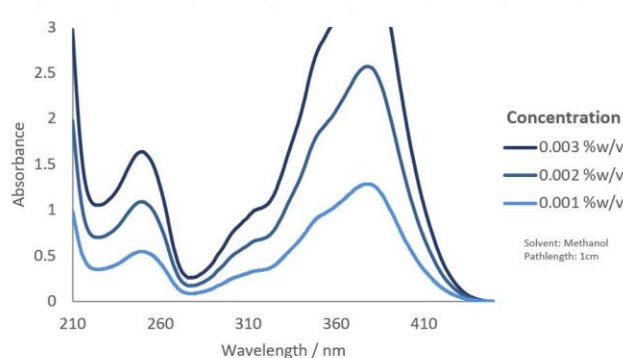
4,4'-bis(diethylamino)benzophenone

CAS Number	EC Number	Mol. Wt.
90-93-7	202-025-4	324.5

### Structure



### UV Spectrum



### Specification (LAM 184)

Appearance :

Purity (GC) :

Melting Range :

Water Content (Karl Fischer) :

Pale yellow to off-yellow solid

≥ 98.0 %area

≥ 92.0 °C

≤ 0.5 %w/w

### Applications

- Pigmented systems
- Black pigmented systems
- LED curing
- Electronics
- Composites

### Storage and Handling

Stable for at least 2 year(s) at 20°C in a sealed container in the dark. A Safety Data Sheet is available on request.

### Transport Classification

(EUROPE AND USA) NON-HAZARDOUS

### Global Inventories

REACH, EINECS, TSCA, DSL, AICS, NZIoC, IECSC, CSCL, ECL, PICCS, TSCI

Disclaimer: Please consult Arkema's disclaimer regarding the use of our products on <https://www.arkema.com/en/products/product-safety/disclaimer/>