

SpeedCure ITX

Aug-2020 v.8

Technical Data Sheet

General Information

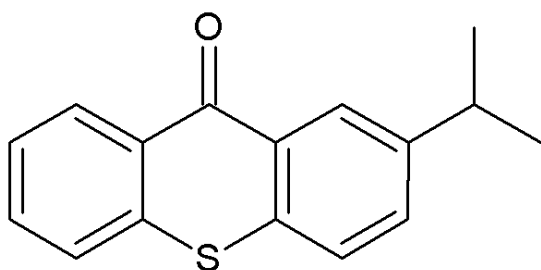
SpeedCure ITX is a Norrish Type II photoinitiator of the thioxanthone family, with absorption maxima at 259 and 383 nm. SpeedCure ITX provides long wavelength sensitisation of appropriate photoinitiators and depth cure when used at 0.1-5 wt% and combined with an amine synergist in UV and LED curable formulations.

Chemical Name

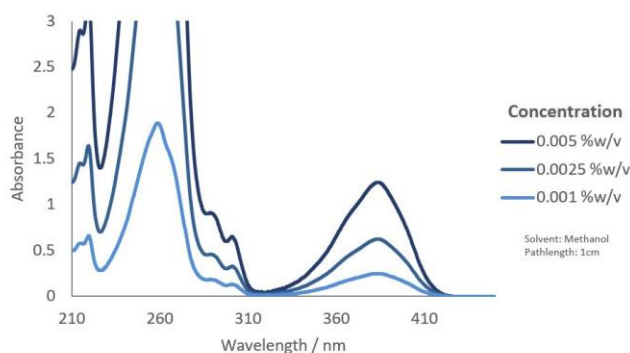
A mixture of 2-isopropylthioxanthone and 4-isopropylthioxanthone

CAS Number	EC Number	Mol. Wt.
5495-84-1	226-827-9	254.3
83846-86-0	281-065-4	254.3

Structure



UV Spectrum



Specification (LAM 185)

Appearance :	Cream to pale yellow solid
Purity (GC) :	≥ 98.0 %area
Melting Range :	56.0 - 72.0 °C
Loss on Drying (60°C, 3 hours, 50-100mbar) :	≤ 0.5 %w/w

Applications

- Pigmented systems
- Black pigmented systems
- LED curing

Storage and Handling

Stable for at least 2 year(s) at 20°C in a sealed container in the dark. A Safety Data Sheet is available on request.

Transport Classification

(EUROPE AND USA) NON-HAZARDOUS

Global Inventories

REACH, EINECS, TSCA, DSL, AICS, NZIoC, IECSC, ISHL, ECL, PICCS, TSCI

Disclaimer: Please consult Arkema's disclaimer regarding the use of our products on <https://www.arkema.com/en/products/product-safety/disclaimer/>

LAMBSON[™]
SPEEDCURE
BY ARKEMA