

SpeedCure KEM

Aug-2020 v. 4

Technical Data Sheet

General Information

SpeedCure KEM is photoinitiator emulsion with absorption maxima at 260 nm, 290 nm and 370nm. SpeedCure KEM provides high reactivity when used at 2-10 wt% in waterbased UV and LED curable formulations.

Chemical Name

Emulsion of photoinitiators

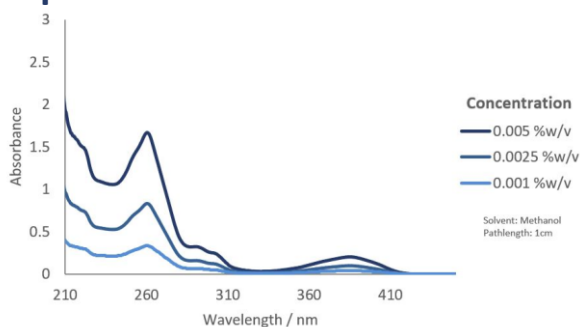
CAS Number

84434-11-7, 1539267-56-5, 2634-33-5

EC Number

282-810-6, n/a, 220-120-9

UV Spectrum



Specification (LAM 400)

Appearance :

Cream coloured, uniform, free flowing liquid

Active Content :

38.0 - 42.0 %w/w

Viscosity (LV, Sp2, 6rpm @25°C) :

1,750.0 - 5,250.0 cPs

Applications

- Adhesives
- Clear coatings
- Water based UV
- LED curing
- Waterbased inkjet inks
- Pigmented systems
- White pigmented systems
- Black pigmented systems

Storage and Handling

Stable for at least 6 months @4-32°C in sealed container in the dark. A Safety Data Sheet is available on request.

Transport Classification

(EUROPE AND USA) HAZARDOUS
Class 9 Packing Group III UN 3082

Global Inventories

REACH, TSCA

Disclaimer: Please consult Arkema's disclaimer regarding the use of our products on <https://www.arkema.com/en/products/product-safety/disclaimer/>

LAMBSON[™]
SPEEDCURE
BY ARKEMA