

SpeedCure MBB

Aug-2020 v.8

Technical Data Sheet

General Information

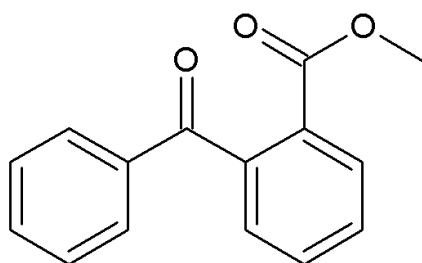
SpeedCure MBB is a Norrish Type II photoinitiator from the benzophenone family, with absorption maximum at 246 nm. SpeedCure MBB provides surface cure when used at 0.5-5 wt% and combined with an amine synergist in UV curable formulations.

Chemical Name

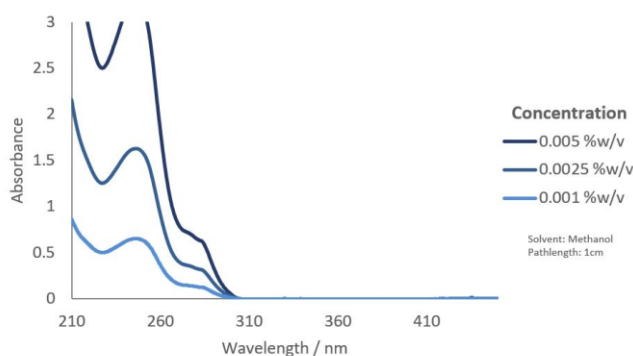
Methyl-2-benzoylbenzoate

CAS Number	EC Number	Mol. Wt.
606-28-0	210-112-3	240.3

Structure



UV Spectrum



Specification (LAM 187)

Appearance :	White to off-white crystalline solid
Purity (HPLC) :	≥ 99.0 %area
Melting Range :	48.0 - 54.0 °C
Loss on Drying (40°C, 16 hours) :	≤ 0.5 %w/w

Applications

- Clear coatings
- Pigmented systems
- Electronics
- Adhesives

Storage and Handling

Stable for at least 2 year(s) at 20°C in a sealed container in the dark. A Safety Data Sheet is available on request.

Transport Classification

(EUROPE AND USA) HAZARDOUS
Class 9 Packing Group III UN 3077

Global Inventories

REACH, EINECS, TSCA, NDSL, AICS, NZIoC, IECSC, CSCL, ECL, TSCI

Disclaimer: Please consult Arkema's disclaimer regarding the use of our products on <https://www.arkema.com/en/products/product-safety/disclaimer/>

LAMBSON
SPEEDCURE
BY ARKEMA