

SpeedCure TEM

Aug-2020 v. 4

Technical Data Sheet

General Information

SpeedCure TEM is a stable photoinitiator emulsion with absorption maxima at 260 nm and 370nm. SpeedCure TEM provides high reactivity, improved cured film properties and enhanced formulation compatibility when used at 2-10 wt% in waterbased UV and LED curable formulations.

Chemical Name

Emulsion of Photoinitiators

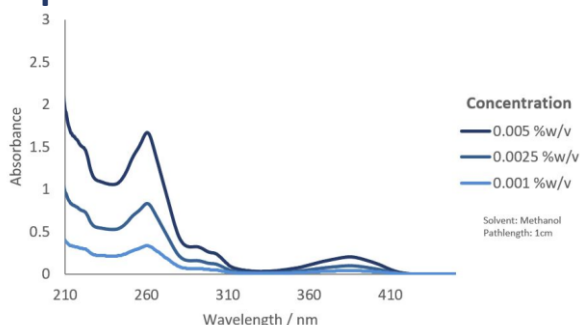
CAS Number

84434-11-7, 1539267-56-5, 2634-33-5

EC Number

282-810-6, n/a, 220-120-9

UV Spectrum



Specification (LAM 402)

Appearance :

Cream coloured, uniform, free flowing liquid

Solids Content (2g, 105°C, 2 hours) :

47.5 - 52.5 %w/w

Applications

- Waterbased clear wood coatings
- Waterbased pigmented wood coatings
- Other waterbased specialty coatings

Storage and Handling

Stable for at least 6 months @4-32°C in sealed container in the dark. A Safety Data Sheet is available on request.

Transport Classification

(EUROPE AND USA) HAZARDOUS
Class 9 Packing Group III UN 3082

Global Inventories

REACH, TSCA

Disclaimer: Please consult Arkema's disclaimer regarding the use of our products on <https://www.arkema.com/en/products/product-safety/disclaimer/>

LAMBSON™
SPEEDCURE
BY ARKEMA