

# SpeedCure XKm

Aug-2020 v. 6

## Technical Data Sheet

### General Information

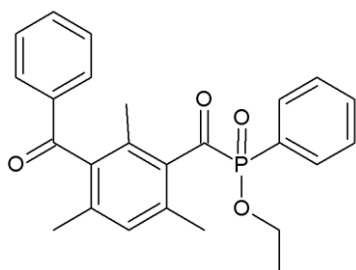
SpeedCure XKm is a hybrid Norrish Type I / Norrish Type II photoinitiator from the phosphine oxide family, with absorption maxima at 247 and 364 nm. SpeedCure XKm provides high reactivity, surface cure and depth cure when used at 0.5-5 wt% and combined with an amine synergist in UV curable formulations.

### Chemical Name

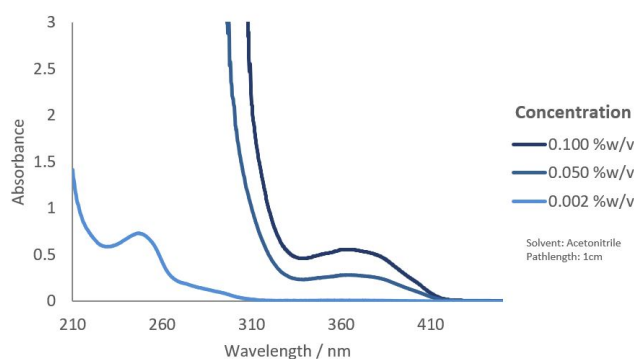
Ethyl(3-benzoyl-2,4,6-trimethylbenzoyl)(phenyl) phosphinate

CAS Number	EC Number	Mol. Wt.
1539267-56-5	n/a	420.4

### Structure



### UV Spectrum



### Specification (LAM 358)

Appearance :	Off-white to beige solid
Purity (HPLC) :	≥ 97.0 %area
Melting Range :	85.0 - 92.0 °C
Loss on Drying (60°C, 3 hours, 50-100mbar) :	≤ 0.5 %w/w

### Applications

- Adhesives
- Clear coatings
- 3D printing
- Composites
- Electronics
- Pigmented systems
- LED curing
- White pigmented systems
- Black pigmented systems

### Storage and Handling

Stable for at least 2 year(s) at 20°C in a sealed container in the dark. A Safety Data Sheet is available on request.

### Transport Classification

(EUROPE AND USA) HAZARDOUS  
Class 9 Packing Group III UN 3077

### Global Inventories

REACH, TSCA

Disclaimer: Please consult Arkema's disclaimer regarding the use of our products on <https://www.arkema.com/en/products/product-safety/disclaimer/>

**LAMBSON**  
SPEEDCURE  
BY ARKEMA